

**ALPHA**  
EXTREME  
MODULARE



UNIQUE AND ENDLESS  
CREATIVE POSSIBILITIES

**ALPHACAN**  
INNOVATIVE PROFILES & SOLUTIONS

A MEMBER OF



ALPHAPRO



ENGLISH

# ALPHA

## EXTREME MODULARE

Minimal and modular design: essential and squared geometries, a unique and distinctive feature with minimal sections that ensures a greater natural light passage, up to 30% higher than a standard PVC window.

Innovative modular system, which makes it possible to obtain a minimalist sash with a homogenous internal surface, without glazing beads.

Possibility of managing the inner side of the sash independently of the outer side. This makes it possible to create different types of sash by combining different profiles.

Top thermal insulation performance: excellent values in official certification tests.

Customisation and colours: the widest range of interior and exterior window decors with harmonised bases and gaskets.

## WELL-BEING IN YOUR HOME

**MODULARITY**  
new generation windows

**ESSENTIAL LINES**  
minimalist and modular design

**45 COLOURS**  
for customized interior and exterior finishes

**MY DESIGN**  
endless possibilities for creating a totally customized interior window decoration

**TOP INSULATION**  
for your comfort and well-being

**RESPECT FOR THE ENVIRONMENT**  
high energy efficiency

**CIRCULAR ECONOMY**  
and sustainability

**EXTREME DURABILITY**  
value that lasts

**10 YEARS**  
warranty

**VERSATILITY**  
in every context

## 10 REASONS TO CHOOSE

### ALPHA EXTREME MODULARE

Modular sash that allows countless combinations and meets every need

Minimal sections and double-sash windows with a 95 mm narrow central knot for a greater natural light passage

Harmonised bases and gaskets to match the proposed finishes at best

Customised windows: elegant colours and decors that fit harmoniously into all living contexts

Excellent air and water tightness values and high insulation against external noise

Energy saving: PVC windows contribute significantly to energy savings in buildings

PVC is a fully recyclable material. In addition, the profiles are made from a good percentage of recycled material

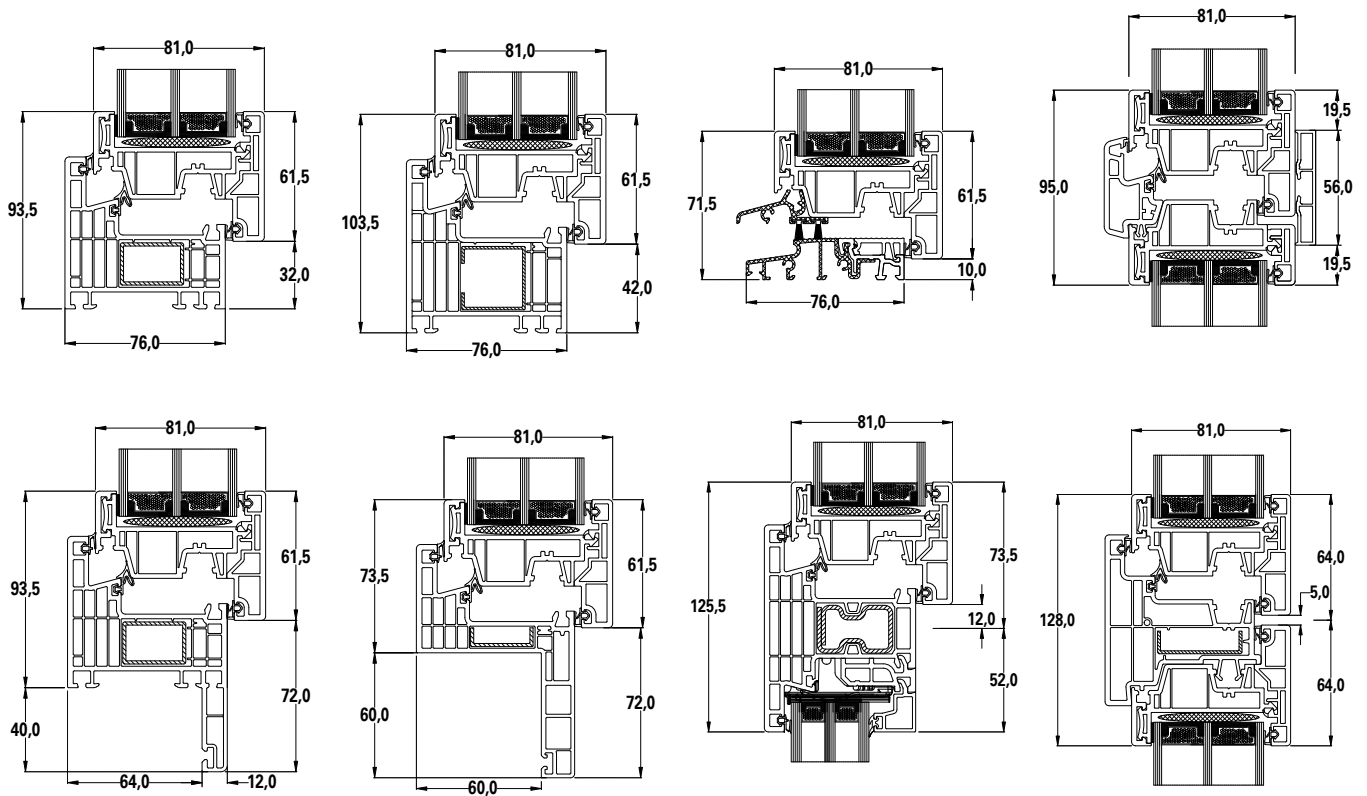
Robustness and resistance: the PVC configuration is impervious to aggression from atmospheric agents

Our PVC products are guaranteed for 10 years and have extremely low maintenance costs

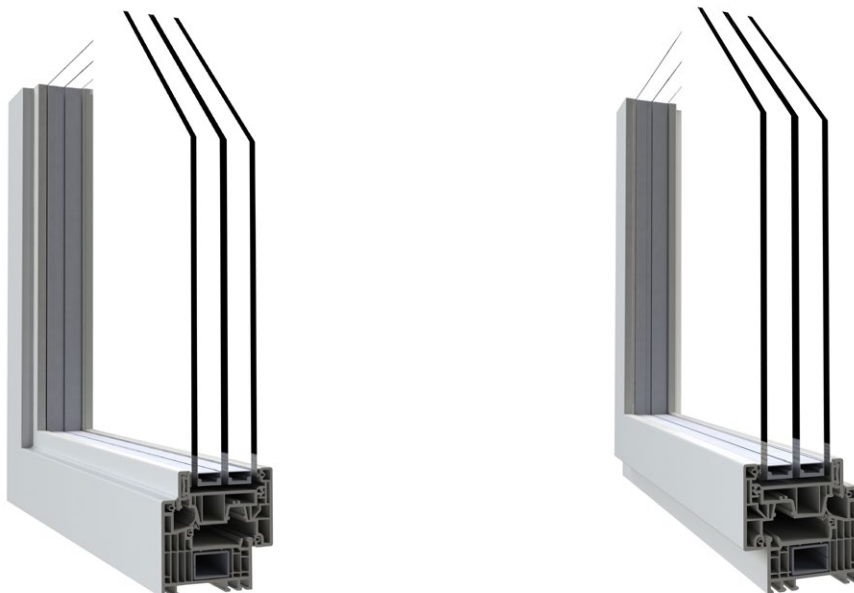
Can be used for both new buildings and renovations



# SECTIONS

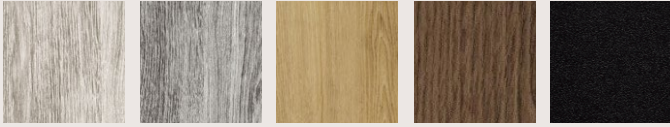


SYSTEM	PROPERTIES	VALUE	STANDARD
ALPHA EXTREME MODULARE	Transmittance ( $U_{\rho}$ ) [ $W/m^2 K$ ]	1,0	UNI EN ISO 10077-1
	Transmittance with ecoreinforcement ( $U_{\rho}$ ) [ $W/m^2 K$ ]	0,94	
	Air Permeability	Class 4	UNI EN 12207
	Water tightness	Up to 9A	UNI EN 12208
	Wind load resistance	Up to C5	UNI EN 12210
	Load bearing capacity 350 N (UNI EN 14608)	passed	UNI EN 14351-1

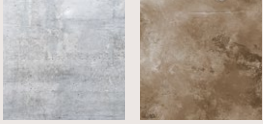


# DIFFERENT COLOUR SOLUTIONS

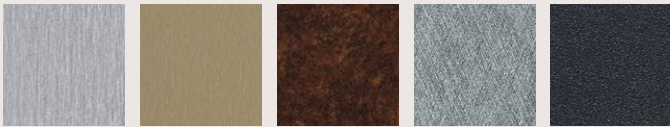
## COLLECTION NEW PROPOSALS



## COLLECTION MY DESIGN BY ALPHACAN



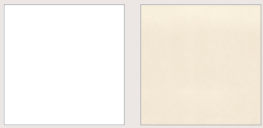
## COLLECTION METALLIC DESIGN



## COLLECTION MATT COLOURS



## MASS COLOURS



## COLLECTION CLASSIC COLOURS



Note: All pictures shown are for illustration purpose only and actual colour may vary from the original

ALPHACAN and PROFIALIS, the brands of the ALPHAPRO group, have been designing, manufacturing and distributing PVC systems in Europe and worldwide for over 60 years. Recognized for their window profiles, blinds, gates, roof coverings and customized finishes, ALPHACAN and PROFIALIS are now partnering to offer you solutions developed in the group's Research & Development centers.

The ALPHAPRO Group and its partners strive daily to create innovation, making a specific contribution to reduce and save energy consumption, with product ranges according to the construction principles and concept of the Passive House (near-zero energy building) and actively participating in PVC recycling.

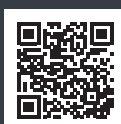
**ALPHACAN**  
INNOVATIVE PROFILES & SOLUTIONS

A MEMBER OF

  
**ALPHAPRO**

Company Headquarters and Production plant  
Via San Sisto, 24 - I-38062 Arco (TN)  
Tel. +39 0464 587 500

info@alphacan.it www.alphacan.com



AUTHORIZED MANUFACTURER ALPHACAN